



# GMT MONTHLY MEMBERSHIP PROGRESS REPORT

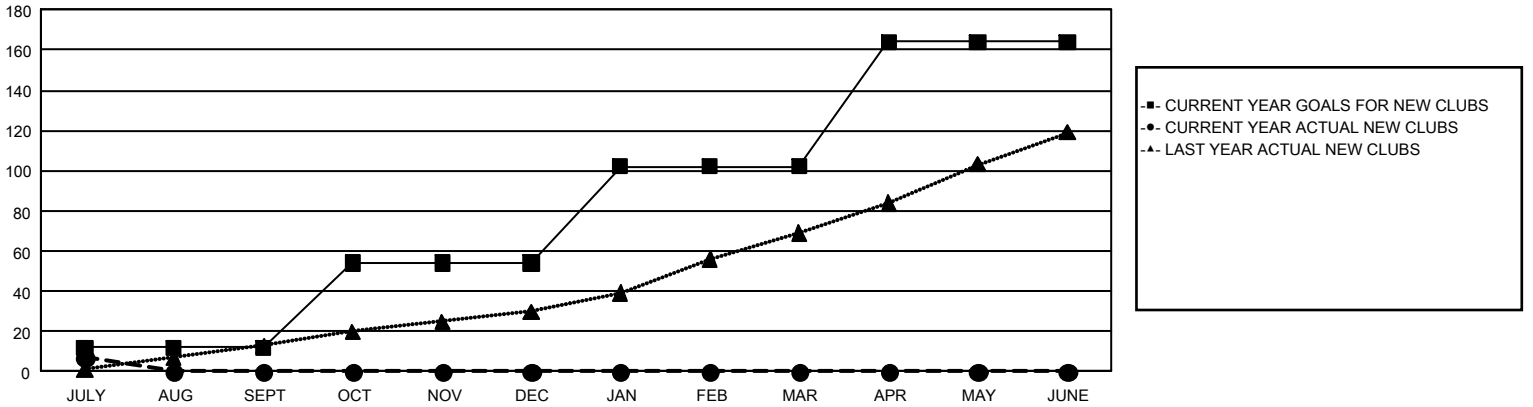
## GAT Constitutional Area 4

Results as of: 7/31/2024

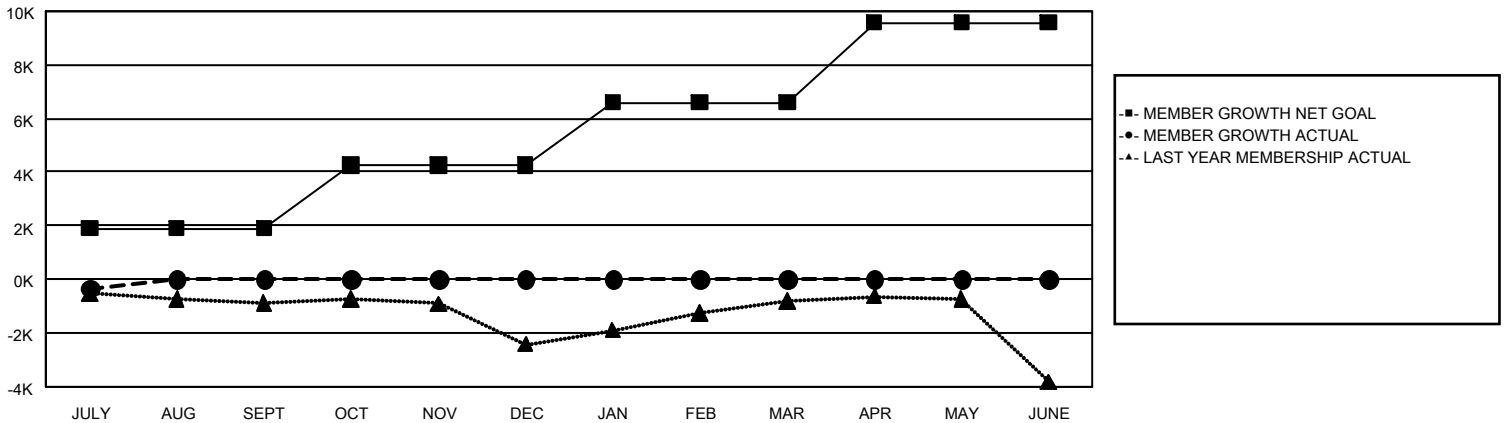
REPORT DOES NOT INCLUDE CLUBS IN UNDISTRICTED AREAS.

Clubs				Members			
RESULTS FOR 2024-2025				RESULTS FOR 2024-2025			
QUARTER	NEW CLUB GOAL	NEW CLUBS	DROPPED CLUBS	QUARTER	MEMBER GROWTH NET GOAL	MEMBER GROWTH ACTUAL	DROPPED MEMBERS ACTUAL (including transfers)
JULY/AUG/SEPT	12	7	26	JULY/AUG/SEPT	1,904	1,442	1,512
OCT/NOV/DEC	42	0	0	OCT/NOV/DEC	2,360	0	0
JAN/FEB/MAR	48	0	0	JAN/FEB/MAR	2,330	0	0
APR/MAY/JUNE	62	0	0	APR/MAY/JUNE	2,988	0	0

**GOALS AND ACTUAL NEW CLUBS CUMULATIVE**



**GOALS AND ACTUAL MEMBERS CUMULATIVE**



<b>DROPPED CLUBS: 21</b>	<b>682 CLUBS OF 8,182 ADDED 1 OR MORE NEW MEMBERS</b>	<b><u>GENDER DISTRIBUTION</u></b> MALE                    154,190 (73.90%) FEMALE                   54,434 (26.09%)
<b><u>DROPPED MEMBERS</u></b> DECEASED                    135 CLUB CANCELLED                36 OTHER                            1,332 <hr/> TOTAL                            1,503	<a href="#">CLICK HERE FOR CUMULATIVE MEMBERSHIP DATA</a>	TOTAL FAMILY UNIT MEMBERS                    10,557  FAMILY MEMBERS PAYING HALF DUES                    5,504